

## Fatal outcome of chikungunya virus infection in Brazil

Shirlene Telmos Silva de Lima <sup>1,2,a</sup>, William Marciel de Souza <sup>3,a,#</sup>, John Washington Cavalcante <sup>1,a</sup>, Darlan da Silva Candido <sup>4,a</sup>, Marcilio Jorge Fumagalli <sup>3,a</sup>, Jean-Paul Carrera <sup>4,5</sup>, Leda Maria Simões Mello <sup>2</sup>, Fernanda Montenegro de Carvalho Araújo <sup>2,6</sup>, Izabel Letícia Cavalcante Ramalho <sup>2</sup>, Francisca Kalline de Almeida Barreto <sup>1</sup>, Deborah Nunes de Melo Braga <sup>7</sup>, Adriana Rocha Simião <sup>1</sup>, Mayara Jane Miranda da Silva <sup>8</sup>, Rhaquel de Moraes Alves Barbosa Oliveira <sup>1</sup>, Clayton Pereira Silva Lima <sup>8</sup>, Camila de Sousa Lins <sup>6</sup>, Rafael Ribeiro Barata <sup>8</sup>, Marcelo Nunes Pereira Melo <sup>6</sup>, Michel Platini Caldas de Souza <sup>8</sup>, Luciano Monteiro Franco <sup>6</sup>, Fábio Rocha Fernandes Távora <sup>6</sup>, Daniele Rocha Queiroz Lemos <sup>6</sup>, Carlos Henrique Moraes de Alencar <sup>1</sup>, Ronaldo de Jesus <sup>9</sup>, Vagner de Souza Fonseca <sup>9,10</sup>, Leonardo Hermes Dutra <sup>10</sup>, André Luiz de Abreu <sup>10</sup>, Emerson Luiz Lima Araújo <sup>10</sup>, André Ricardo Ribas Freitas <sup>11</sup>, João Lídio da Silva Gonçalves Vianez Júnior <sup>8</sup>, Oliver G. Pybus <sup>4</sup>, Luiz Tadeu Moraes Figueiredo <sup>3</sup>, Nuno Rodrigues Faria <sup>4,12,b</sup>, Márcio Roberto Teixeira Nunes <sup>8,b</sup>, Luciano Pamplona de Góes Cavalcanti <sup>1,b</sup>, and Fabio Miyajima <sup>1,13,b</sup>.

1. Federal University of Ceará, Fortaleza, Brazil.

2. Central Public Health Laboratory of Ceará State, Fortaleza, Brazil.

3. Virology Research Center, University of São Paulo, Ribeirão Preto, Brazil.

4. Department of Zoology, University of Oxford, Oxford, United Kingdom.

5. Department of Research In Virology and Biotechnology, Gorgas Memorial Institute of Health Studies, Panama City, Panama.

© The Author(s) 2020. Published by Oxford University Press for the Infectious Diseases Society of America.

This is an Open Access article distributed under the terms of the Creative Commons Attribution License (<http://creativecommons.org/licenses/by/4.0/>), which permits unrestricted reuse, distribution, and reproduction in any medium, provided the original work is properly cited.

6. Faculdade de Medicina do Centro Universitário Christus, Fortaleza, Ceará, Brazil.
7. Death Verification Service Dr. Rocha Furtado, State Health Secretariat of Ceará, Fortaleza, Ceará, Brazil.
8. Evandro Chagas Institute, Ministry of Health, Ananindeua, Brazil
9. Universidade Federal de Minas Gerais, Brazil.
10. Ministry of Health, Brasília, Brazil.
11. Faculdade de Medicina São Leopoldo Mandic, Campinas, São Paulo, Brazil.
12. Department of Infectious Disease Epidemiology, Imperial College London, London, UK.
13. Oswaldo Cruz Foundation (Fiocruz), Branch Ceará, Eusebio, Brazil.

<sup>a</sup>S.T.S.L., W.M.S., J.W.C., D.S.C, and M.J.F. contributed equally to this work.

<sup>b</sup>N.R.F., M.R.T.N., L.P.G.C. and F.M. contributed equally to this work.

**# Corresponding author:** Dr. William Marciel de Souza, Virology Research Center, University of São Paulo, Av. Bandeirantes, 3900, Monte Alegre, 14090-900, Ribeirão Preto, SP, Brazil. E-mail: [wmarciel@usp.br](mailto:wmarciel@usp.br). Phone: +55 16 3315 4508.

**Summary:** The introduction of East-Central-South-African genotype of Chikungunya virus in Brazil caused neurological infections that led to death. The risk of death during acute and sub-acute CHIKV infection was higher in patients with diabetes.

Accepted Manuscript

## Abstract

**Background:** *Chikungunya virus* (CHIKV) emerged in the Americas in 2013 and has caused ~2.1 million cases and over 600 deaths. A retrospective investigation was undertaken to describe clinical, epidemiological and virus genomic features associated with deaths caused by CHIKV in Ceará state, northeast Brazil.

**Methods:** Sera, cerebrospinal fluid (CSF) and tissue samples from 100 fatal cases with suspected arbovirus infection were tested for CHIKV, dengue (DENV) and Zika virus (ZIKV). Clinical, epidemiological and death reports were obtained for patients with confirmed CHIKV infection. Logistic regression analysis was undertaken to identify independent factors associated with risk of death during CHIKV infection. Phylogenetic analysis was conducted using whole genomes from a subset of cases.

**Results:** 68 fatal cases had CHIKV infection confirmed by RT-qPCR (52.9%), viral antigen (41.1%), and/or specific-IgM (63.2%). Co-detection of CHIKV with DENV were found in 22% of fatal cases, ZIKV in 2.9%, and DENV and ZIKV in 1.5%. A total of 39 CHIKV-deaths presented with neurological signs and symptoms, and CHIKV-RNA was found in the CSF of 92.3% of these patients. Fatal outcomes were associated with irreversible multiple organ dysfunction syndrome. Patients with diabetes appear to die at a higher frequency during the sub-acute phase. Genetic analysis showed circulation of two CHIKV-East Central South African (ECSA) lineages in Ceará and revealed no unique virus genomic mutation associated with fatal outcome.

**Conclusion:** The investigation of the largest cross-sectional cohort of CHIKV-deaths to date reveals that CHIKV-ECSA strains can cause death in individuals from both risk and non-risk groups, including young adults.

**Keywords:** Chikungunya virus, alphavirus artritogenic, arbovirus, fatal cases.

## INTRODUCTION

*Chikungunya virus* (CHIKV) is an enveloped, single-stranded positive-sense RNA virus that belongs to the *Alphavirus* genus, *Togaviridae* family [1]. It is mainly transmitted to humans by the *Aedes aegypti* and *Aedes albopictus* mosquitoes. Most cases are characterized by an acute infection with fever, myalgia, exanthema, and arthralgia lasting up to three weeks post-infection [2, 3]. For some CHIKV cases, arthralgia can persist for more than three months, indicating a transition to a chronic stage [2, 3].

In July 2014, the first autochthonous Chikungunya cases were reported in Brazil. Genetic analysis revealed the co-circulation of two distinct genotypes were introduced almost simultaneously in the country. CHIKV Asian genotype was detected in Amapá state, North Brazil and the CHIKV East Central South African (ECSA) genotype was first reported in Bahia state, Northeast [4]. Until December 2019, more than 800,000 CHIKV cases were notified in all regions of Brazil [5].

Between 2013 and 2019, the Pan American Health Organization (PAHO) reported 631 deaths associated with CHIKV infection in South America, likely an underestimation of deaths caused by CHIKV [6]. The highest number of CHIKV-related deaths in the Americas, 214 deaths, were reported in the Ceará state, Northeast Brazil, where an Arbovirus Death Investigation Committee (ADIC) was created due to the high mortality rate and increase of suspected arbovirus-associated deaths [6-8]. This high number of reported fatalities is comparable to what was observed in La Reunion Island [9, 10], where the outbreak was caused by the CHIKV Indian Ocean lineage [11]. In addition, neurologic infections and fatal cases were previously reported during the CHIKV epidemic in 1963-1965 in India [12-14].

Despite their importance for public health management, epidemiological and clinical investigations of fatal cases caused by CHIKV typically focus on case reports [15-21]. Moreover, no information exists on the genetic diversity of CHIKV circulating in Ceará state.

This study summarizes the demographic, clinical, laboratorial and post-mortem findings of the largest cross-sectional cohort of CHIKV-deaths to date.

## **MATERIALS AND METHODS**

### **Study population and ethics statement**

We selected all fatal cases with clinical suspected arboviral infection and sera, cerebrospinal fluid (CSF), and tissue samples available recorded by the Death Verification Service (DVS) of State Health Secretariat of Ceará, between December 2016 and October 2017. In each case, autopsies were undertaken within 12 hours post-mortem. Sera, CSF, and tissue samples were collected and stored at -80°C for subsequent investigation. Tissues were also conserved in formalin-fixed blocks, and were sent to Evandro Chagas Institute and the Brazilian Ministry of Health, for arboviral histopathological and immunohistochemistry (IHC) analyses. The study was conducted after approval by the ethics committee of the Federal University of Ceará (CAAE number: 85921418.3.0000.5054), Brazil.

### **Case definitions**

A suspected fatal case of CHIKV infection was defined as a patient that presented with fever, rash, arthralgia headache and/or myalgia during the hospitalization or perimortem period. A confirmed CHIKV-death was defined as a suspected fatal case associated with CHIKV infection, plus one positive laboratory result for CHIKV either by RT-qPCR, IgM detection, and/or IHC[5]. In addition, we defined an acute fatal outcome as a case that lasted up to 20 days, representing the acute disease; and a sub-acute fatal outcome, as a case that lasted longer than 20 days up to 90 days. Patients with neurologic manifestations (e.g., confusion and syncope) and RT-qPCR or IgM detection against CHIKV in CSF were considered to have a central nervous system (CNS) infection caused by CHIKV [5].

## Laboratory testing

RNA from CSF and brain tissue were extracted using the QIAamp Viral RNA Mini Kit (Qiagen, USA) and the ReliaPrep™ RNA Miniprep Systems (Promega, USA), respectively. Extracted RNA was tested by specific RT-qPCR for CHIKV [22], DENV [23], and ZIKV [24]. We also tested the post-mortem sera and CSF samples using IgM-capture ELISAs for antibody-response against CHIKV (Euroimmun, Germany), DENV (Serion, Germany) and ZIKV (NovaTec Immundiagnostica GmbH, Germany). In addition, an ELISA for DENV-NS1 antigens (Bio-Rad Laboratories, USA) was also used. We also performed IHC analysis of liver and brain tissue samples of all patients [25].

Based on the laboratory diagnosis from the investigation of fatal cases of CHIKV, complete clinical records were obtained from the laboratory management system (*GAL - Gerenciador de Ambiente Laboratorial*). Autopsy records for confirmed CHIKV fatal cases were obtained from DVS ([www.saude.ce.gov.br](http://www.saude.ce.gov.br)). Demographic, epidemiological, clinical data (including comorbidities/immunosuppression history), were extracted from GAL, autopsy records and home visit reports with the family of patients who died.

## Epidemiological data

Epidemiological analysis of autochthonous CHIKV cases in Ceará state was undertaken using weekly reports of suspected cases from January to December 2017. Epidemiological reports of cases were obtained from the Brazilian Ministry of Health. Incidences were calculated based on the estimated population of Ceará state in 2017, as reported by the Brazilian Institute of Geography and Statistics ([www.ibge.gov.br](http://www.ibge.gov.br)).

## Statistical Analysis

Descriptive analyses of results are reported as frequencies, arithmetic means, and ranges (when appropriate). The Mann-Whitney U test performed in RStudio 1.2.1335 ([www.rstudio.com](http://www.rstudio.com)), was used to compare groups with comorbidities. For the regression analysis, the outcome variable was classified as patients with fatal outcome during the acute or sub-acute phase of the disease. The most frequent comorbidities in our cohort were used for statistical analysis. To determine comorbidities that may affect the frequency of death during the acute or sub-acute phase of the disease, we conducted a univariate logistic regression analysis, followed by a multivariable logistic regression controlling for sex and age. P-values with  $\alpha < 0.05$  were considered to be significant. Statistical analyses were performed with the package Stata v.14 (StataCorp, USA).

## Viral genomic sequencing and phylogenetic analysis

Genome sequencing was performed using a targeted multiplex PCR scheme that can amplify both CHIKV genotypes circulating in Brazil [26]. This was followed by Nanopore genome sequencing using the MinION sequencing platform from Oxford Nanopore Technologies, UK [26]. Preliminary runs showed that all sequences belonged to the same genotype. To improve consensus sequencing coverage, we selected 36 publicly available full genome strains and re-designed CHIKV specific sequencing primers for the genotype identified on preliminary runs by correcting mismatches. Consensus sequences were generated with a validated bioinformatics pipeline, considering a minimum coverage depth of 20x [26].

Newly generated CHIKV consensus sequences were aligned to 87 publicly available whole-genome sequences from Brazil using MAFFT version 7.450 [27]. A maximum likelihood (ML) phylogenetic tree was estimated with RAxML v.8 [28] using the GTR+I+gamma substitution model [28]. Dated-phylogenetic trees were estimated using



BEAST v.1.10 under a GTR+I+gamma model [29]. We used a strict molecular clock model and a Skygrid tree prior [30], that were previously determined as best-fit-models [29]. Evolutionary analyses were run independently in duplicate for 50 million steps, sampling parameters and trees every 10,000 steps. Maximum clade credibility summary trees were generated using TreeAnnotator v.1.10 [29].

### Data availability

Protocols and the new sequencing primers are publicly available at [caddecentre.org/protocols](https://caddecentre.org/protocols). Epidemiological data, phylogenetic trees, XMLs, and Ceará CHIKV genome sequences are available on GitHub repository [will be made available upon acceptance of the publication]. New sequences have been deposited in GenBank with accession numbers [will be made available upon acceptance of the publication].

## RESULTS

In 2017, Ceará state in Brazil experienced a major CHIKV outbreak accounting for 65.7% (n=105,229 of 160,166) of suspected cases in all 27 Brazilian federal states in that year. CHIKV incidence in Ceará state was 1,166 suspected cases per 100,000 inhabitants, the highest in the country [31]. Within Ceará, the municipality of Fortaleza (state capital city) accounted for the majority of CHIKV suspected cases (58.8%, n=61,825 of 105,229) (Figure 1A). Moreover, Ceará notified a total of 194 CHIKV related deaths in 2017 [32]. This corresponds to a case-fatality rate of 1.8 deaths per 1,000 cases in 2017. Importantly, Fortaleza city reported the highest number of CHIKV-related deaths (74.2%, n=144/194) in 2017 in Ceará [8]. As expected, CHIKV-deaths followed a similar temporal distribution to that of the suspected cases in Ceará, with most cases reported in Fortaleza (Figure 1A and 1B).

We used RT-qPCR, serology and IHC to ascertain the cause of death of 100 suspected arbovirus fatal cases. A total of 68% (68/100) of the cases were positive for CHIKV by at least one diagnostic method (Figure 1C). Of these, 70.6% (48/68) were positive by two or more methods. We found that 73.5% (50/68) of deaths were positive for CHIKV only, while 22% (15/68) had viral co-detection with DENV, 2.9% (2/68) co-detection with ZIKV, and 1.5% (1/68) with both DENV and ZIKV. Moreover, CHIKV-RNA was detected in the CSF of 52.9% (36/68) and in the brain of 11.1% (4/36) of the cases. Notably, no DENV and/or ZIKV RNA were detected in the CSF of CHIKV-deaths (Figure 1C).

Figure 2 presents an epidemiological characterization of the 68 CHIKV confirmed deaths analyzed in this study. CHIKV deaths occurred predominantly in adults aged  $\geq 40$  years (61.8%,  $n=42/68$ ), with 29.4% (20/68) in middle-aged adults and 32.4% (22/68) in the elderly. The average age was 47.6 years (median=51 years), ranging from 3 days to 85 years. Most CHIKV-deaths occurred in females (54.4%,  $n=37/68$ ). We also report five CHIKV-deaths that occurred in infants and five in children (Figure 2A).

The general clinical manifestations presented by CHIKV-deaths were fever (64.7%,  $n=44/68$ ), arthralgia (43.3%,  $n=29/67$ ), cardiac symptoms such as cardiac arrest (34.3%,  $n=23/67$ ), dyspnea (33.8%,  $n=23/68$ ), diarrhea (33.8%,  $n=23/68$ ), neurological symptoms such as confusion and syncope (25.4%,  $n=17/67$ ), headache (19.1%,  $n=13/68$ ), and renal failure (5.9%,  $n=4/68$ ) (Figure 2B). The average time between the onset of symptoms and death was 12 days (range: 1-90 days). Out of the 68 CHIKV-deaths, 79.4% (54/68) were patients with acute infection with fatality occurring up to 18 days from the onset of symptoms. On the other hand, 16.2% (11/68) of fatal cases were patients with sub-acute infection. It was not possible to obtain information on the date of symptom onset for three patients (4.4%). Of the 36 fatal cases with CHIKV RNA positive in CSF, three CHIKV-deaths were patients presenting with up to 20 days of infection.

Subsequently, we analyzed comorbidity and immunosuppression records available for 65% (44/68) of CHIKV-deaths. No comorbidities were reported in 45.5% (20/44) of the medical records, while 27.3% (12/44) had one comorbidity, 25% (11/44) had two comorbidities and only 2.3% (1/44) had three comorbidities. The most frequent comorbidities were hypertension in 40.9% (18/44) and diabetes in 15.9% (7/44) of CHIKV-deaths (Figure 2D). All patients with diabetes also had hypertension, but only 38.9% (7/18) of patients with hypertension had diabetes.

The average age of CHIKV-deaths with comorbidities (60 years, range 31-85 years) differs from the average age of CHIKV-deaths of those without comorbidities (37.4 years, range 3 days-79 years) ( $p=0.003$ , Mann-Whitney U test). Multivariable logistic regression analysis, controlled for age and sex, suggests that the risk of dying during the sub-acute phase of CHIKV infection increases seven times in cases with diabetes when compared to cases without diabetes, odds ratio: 7.7,  $p=0.033$  (Table 1 and Supplementary Table 1). No statistically significant difference was observed between the days-to-death of patients with and without comorbidities ( $p=0.2855$ , Mann-Whitney U test). No immunosuppression by cancer, HIV, or corticosteroid treatment was reported in CHIKV-deaths.

For 42 (61.8%) autopsied CHIKV-deaths, heart and/or respiratory failure were the most frequent causes of death, 76.2% (32/42). Autopsies revealed vascular congestion and edema in main organs of CHIKV-deaths (Figure 3). Also, CHIKV-deaths were frequently associated with hepatitis, 58.5% (24/41), pneumonitis, 52.4% (22/42), myocarditis, 36.6% (15/41), and encephalitis, 21.4% (9/42) (Figure 3 and Supplementary Table 2). Other frequent findings in the lungs were hemorrhage in 57.1% (24/42), 54.8% (23/42) atelectasis, 33.3% (14/42) megakaryocytes, and 26.2% (11/42) hemosiderophages (Supplementary Figure 1).

To elucidate the genetic diversity of CHIKV strains in Ceará, we sequenced the viral genomes from seven samples recovered from six CHIKV-deaths (patients 8, 12, 22, 27 from

CSF samples, patient 59 from blood and patient 4 from CSF and blood). ML and Bayesian phylogenies suggested that sequenced CHIKV strains formed two monophyletic clades (1 and 2) with maximum statistical support within the ECSA lineage circulating in Brazil (bootstrap score = 100, posterior support = 1.00). Our analyses suggest that CHIKV was introduced into Ceará state between early 2015 and mid 2016, with the most common ancestor for each cluster at around mid-2016 (cluster 1 = 2016.60, 95% HPD 2016.39 - 2016.90, cluster 2 = 2016.84, 96% HPD, 2015.5-2016.83) (Figure 4). Based on the analysis of the genomes obtained in this study compared to the genomes available, we did not find mutations associated with enhanced infection and transmission in mosquitoes, or increased virulence, and no unique mutations associated with the Ceará sequences.

## DISCUSSION

Herein, we perform the most comprehensive characterization with description of clinical, demographic and laboratory findings of the largest cross-sectional study population of confirmed CHIKV-deaths to date. We confirm CHIKV infection in 68 cases and exclude co-detection with ZIKV and/or DENV in 73.5% of them. Although comorbidities and older age play an important role in CHIKV deaths, we show that almost half of fatal cases did not have any comorbidities and that 38.2% (26/68) of them were aged  $\leq 40$  years. In addition, our autopsy results point to cardiac and respiratory failure, possibly due to generalized congestion and edema as the main death cause in the course of CHIKV infection.

In contrast to other arboviral diseases (e.g., DENV and ZIKV), CHIKV infection is symptomatic in most individuals, manifesting as a typical rapid-onset febrile disease, characterized by intense arthralgia, myalgia, headache, and rash [2]. The clinical manifestations described herein for the 68 CHIKV-deaths were consistent with previous case reports of typical CHIKV infections [2]. However, the detection of CHIKV RNA in the CSF of 36 patients and four brain samples, and the high frequency of neurological symptoms are

strongly indicative of a neurotropic role of CHIKV associated with a severe CNS infection in more than half of CHIKV-deaths.

CHIKV-deaths have only been reported as an outcome of acute infection [15-20]. However, 16.2% of the fatal cases in our study were sub-acute CHIKV infection, with symptom onset within 25 to 90 days prior to death, showing that sub-acute CHIKV infections may also have a fatal outcome. These findings are consistent with studies that demonstrate that the peak of excess deaths occurs with a lag of one month in relation to reported cases of chikungunya [33]. Sub-acute CHIKV-deaths especially may be underreported as their long-term duration might decrease the idea of an association between a CHIKV diagnosis and a deadly outcome, while increasing the apparent importance of comorbidities or even hospital-acquired infections as the main cause of death [6].

Severe chikungunya infection has been correlated with age dependency and follows a U-shaped parabolic curve [2]. Here, we confirmed that middle aged adults and the elderly constituted the majority of CHIKV-deaths, followed by infants and children, while no fatal cases in adolescents were identified [2]. However, 23.5% of CHIKV-deaths occurred in young adults, indicating that deaths by CHIKV infection do occur at young ages more than previously anticipated. Future clinical and epidemiological studies of CHIKV could help to shed light on the risk of infection and disease severity per age class.

Previously reported risk groups for severe chikungunya infection were patients with comorbidities or those immunocompromised [2]. Our results partially support this conclusion, as 54.5% of our cases had at least one comorbidity. Notably, we observed that diabetes considerably increases the risk for death in the sub-acute phase of CHIKV infection. However, 45.5% did not have any comorbidity reported in their medical records. In addition, none of our cases had any medical history of immunosuppression. Collectively, these results suggest that chikungunya infection can lead to patient death even in the absence of an underlying medical condition.

Our autopsy and histopathological analyses suggest that multiple organ dysfunction syndrome in CHIKV infection may occur by hemodynamic disturbance (vascular congestion, edema, and hemorrhage) of main organs, predominately heart and lungs. Also, the presence of hemosiderophages and megakaryocytes within the lungs suggests a role for increasing pressure on alveolar capillaries leading to hemorrhagic complications, as previously described for DENV [34, 35]. Therefore, careful monitoring of fluid balance and administration of hypotonic solutions can be required as part of clinical management.

CHIKV has widely spread throughout Ceará state. Our genetic analysis revealed that virus strains circulating in the state belong to the CHIKV-ECSA genotype introduced in Bahia state in 2014 [4]. We find no amino acid mutations associated with enhanced infection and transmission in mosquito vectors [11].

Our results demonstrated that CHIKV associated deaths are not a rare event during large outbreaks, and may occur even in low-risk populations (young age and no comorbidities). Thus, the total disease burden must be re-evaluated considering these outcomes. Guidelines and diagnoses need to be improved to prevent fatal outcomes in CHIKV-infected patients.

## Notes

**Author contributions.** STSL, LMSM, FMCA, ILCR, MJMS, CPSL, RRB and MPCs performed the RT-qPCR and serological tests. FKAB, DNMB, ARS, RMABO, CSL, MNPM, LMF, FRFT, DRQL, CHMA performed the histopathological and immunohistochemistry analysis. WMS, DSC and MJF performed viral genome sequencing. RJ, VSF, LHD, ALEA and ELLA provided the epidemiological data. DSC and NRF performed the bioinformatics work and assisted with phylogenetic analyses. DSC, JPC, NRF performed the statistical analyses. ARRF, JLSGV, LTMF, LPGC and FM oversaw parts of the laboratory work. JPC, OGP, LTMF, MRTN, LPGC and FM contributed to the overall design, interpreted results, and commented on Article drafts. WMS, DSC, MJF, STSL, and NRF wrote the Article. WMS led the design and execution of the study and oversaw all analyses and interpretation. All authors have seen and approved the final submitted Article.

**Acknowledgments.** We thank the staffs at the Central Public Health Laboratory of Ceará state, Brazil for their support and assistance with this investigation.

**Disclaimer.** The funding sources had no involvement in the study.

**Financial support.** This work was supported by the São Paulo Research Foundation, Brazil (No. 2017/13981-0, 2018/09383-3, 2018/14389-0, 2018/00837-1 and 2019/24251-9), Brazilian National Council for Scientific and Technological Development (grant no. 302584/2015-3, 408338/2018-0). Clarendon Scholarship and by the Department of Zoology, University of Oxford. *Fundação Cearense de Apoio ao Desenvolvimento Científico e Tecnológico* (FUNCAP 01/2017-SUS/PPSUS-CE FUNCAPSESA-Decit/SCTIE). Wellcome Trust and Royal Society Sir Henry Dale Fellowship (grant 204311/Z/16/Z), and Network of

Clinical and Applied Research into Chikungunya (REPLICK) through funds from the Department of Science and Technology (DECIT), Brazilian Ministry of Health.

**Potential conflicts of interest.** The authors no reported conflicts of interest. All authors have submitted the ICMJE Form for Disclosure of Potential Conflicts of Interest. Conflicts that the editors consider relevant to the content of the manuscript have been disclosed.

Accepted Manuscript



## REFERENCES

1. Chen R, Mukhopadhyay S, Merits A, et al. ICTV Virus Taxonomy Profile: Togaviridae. *The Journal of general virology* **2018**; 99(6): 761-2.
2. Weaver SC, Lecuit M. Chikungunya virus and the global spread of a mosquito-borne disease. *The New England journal of medicine* **2015**; 372(13): 1231-9.
3. Queyriaux B, Simon F, Grandadam M, Michel R, Tolou H, Boutin JP. Clinical burden of chikungunya virus infection. *The Lancet Infectious diseases* **2008**; 8(1): 2-3.
4. Nunes MR, Faria NR, de Vasconcelos JM, et al. Emergence and potential for spread of Chikungunya virus in Brazil. *BMC medicine* **2015**; 13: 102.
5. Brasil. Chikungunya : manejo clínico. In: Ministério da Saúde SdVneSd, Departamento de Vigilância das Doenças Transmissíveis. Brasília: Ministério da Saúde, **2017**:65p.
6. Lima Neto AS, Sousa GS, Nascimento OJ, Castro MC. Chikungunya-attributable deaths: A neglected outcome of a neglected disease. *PLoS neglected tropical diseases* **2019**; 13(9): e0007575.
7. Cavalcanti LPG, Escossia K, Simiao AR, et al. Experience of the Arbovirus Death Investigation Committee in Ceara, Brazil, in 2017: advances and challenges. *Epidemiologia e servicos de saude : revista do Sistema Unico de Saude do Brasil* **2019**; 28(3): e2018397.
8. Ceará GdEd. Boletim Epidemiológico: Dengue, Chikungunya e Zika. In: Saúde Sd. Fortaleza, Ceará, Brazil, **2018**:13.
9. Economopoulou A, Dominguez M, Helynck B, et al. Atypical Chikungunya virus infections: clinical manifestations, mortality and risk factors for severe

- disease during the 2005-2006 outbreak on Reunion. *Epidemiology and infection* **2009**; 137(4): 534-41.
10. Sissoko D, Malvy D, Ezzedine K, et al. Post-epidemic Chikungunya disease on Reunion Island: course of rheumatic manifestations and associated factors over a 15-month period. *PLoS neglected tropical diseases* **2009**; 3(3): e389.
  11. Tsetsarkin KA, Vanlandingham DL, McGee CE, Higgs S. A single mutation in chikungunya virus affects vector specificity and epidemic potential. *PLoS pathogens* **2007**; 3(12): e201.
  12. Rao TR, Anderson CR. Concluding Review on the Papers on the Outbreak of Febrile Illness with Haemorrhagic Manifestations in Calcutta. *The Indian journal of medical research* **1964**; 52: 727-34.
  13. Carey DE, Myers RM, DeRanitz CM, Jadhav M, Reuben R. The 1964 chikungunya epidemic at Vellore, South India, including observations on concurrent dengue. *Transactions of the Royal Society of Tropical Medicine and Hygiene* **1969**; 63(4): 434-45.
  14. Rodrigues FM, Patankar MR, Banerjee K, et al. Etiology of the 1965 epidemic of febrile illness in Nagpur city, Maharashtra State, India. *Bulletin of the World Health Organization* **1972**; 46(2): 173-9.
  15. Casolari S, Briganti E, Zanotti M, et al. A fatal case of encephalitis associated with Chikungunya virus infection. *Scandinavian journal of infectious diseases* **2008**; 40(11-12): 995-6.
  16. Ganesan K, Diwan A, Shankar SK, Desai SB, Sainani GS, Katrak SM. Chikungunya encephalomyeloradiculitis: report of 2 cases with neuroimaging and 1 case with autopsy findings. *AJNR American journal of neuroradiology* **2008**; 29(9): 1636-7.

17. Chua HH, Abdul Rashid K, Law WC, et al. A fatal case of chikungunya virus infection with liver involvement. *The Medical journal of Malaysia* **2010**; 65(1): 83-4.
18. Sam IC, Kamarulzaman A, Ong GS, et al. Chikungunya virus-associated death in Malaysia. *Tropical biomedicine* **2010**; 27(2): 343-7.
19. Hoz JM, Bayona B, Vilorio S, Accini JL, Juan-Vergara HS, Viasus D. Fatal cases of Chikungunya virus infection in Colombia: Diagnostic and treatment challenges. *Journal of clinical virology : the official publication of the Pan American Society for Clinical Virology* **2015**; 69: 27-9.
20. Sa PKO, Nunes MM, Leite IR, et al. Chikungunya virus infection with severe neurologic manifestations: report of four fatal cases. *Revista da Sociedade Brasileira de Medicina Tropical* **2017**; 50(2): 265-8.
21. Oliveira R, Barreto FKA, Maia A, et al. Maternal and infant death after probable vertical transmission of chikungunya virus in Brazil - case report. *BMC infectious diseases* **2018**; 18(1): 333.
22. Lanciotti RS, Kosoy OL, Laven JJ, et al. Chikungunya virus in US travelers returning from India, 2006. *Emerging infectious diseases* **2007**; 13(5): 764-7.
23. Johnson BW, Russell BJ, Lanciotti RS. Serotype-specific detection of dengue viruses in a fourplex real-time reverse transcriptase PCR assay. *Journal of clinical microbiology* **2005**; 43(10): 4977-83.
24. Lanciotti RS, Kosoy OL, Laven JJ, et al. Genetic and serologic properties of Zika virus associated with an epidemic, Yap State, Micronesia, 2007. *Emerging infectious diseases* **2008**; 14(8): 1232-9.

25. Labadie K, Larcher T, Joubert C, et al. Chikungunya disease in nonhuman primates involves long-term viral persistence in macrophages. *The Journal of clinical investigation* **2010**; 120(3): 894-906.
26. Quick J, Grubaugh ND, Pullan ST, et al. Multiplex PCR method for MinION and Illumina sequencing of Zika and other virus genomes directly from clinical samples. *Nature protocols* **2017**; 12(6): 1261-76.
27. Katoh K, Misawa K, Kuma K, Miyata T. MAFFT: a novel method for rapid multiple sequence alignment based on fast Fourier transform. *Nucleic acids research* **2002**; 30(14): 3059-66.
28. Stamatakis A. RAxML version 8: a tool for phylogenetic analysis and post-analysis of large phylogenies. *Bioinformatics* **2014**; 30(9): 1312-3.
29. Suchard MA, Lemey P, Baele G, Ayres DL, Drummond AJ, Rambaut A. Bayesian phylogenetic and phylodynamic data integration using BEAST 1.10. *Virus evolution* **2018**; 4(1): vey016.
30. Gill MS, Lemey P, Faria NR, Rambaut A, Shapiro B, Suchard MA. Improving Bayesian population dynamics inference: a coalescent-based model for multiple loci. *Molecular biology and evolution* **2013**; 30(3): 713-24.
31. Saúde Mrd. Monitoramento dos casos de dengue, febre de chikungunya e febre pelo vírus Zika até a Semana Epidemiológica 50, 2017. In: *Saúde SdVne Vol. 48*. Brasilia, Brazil: Ministério da Saúde, **2017**:12.
32. Simiao AR, Barreto FKA, Oliveira R, et al. A major chikungunya epidemic with high mortality in northeastern Brazil. *Revista da Sociedade Brasileira de Medicina Tropical* **2019**; 52: e20190266.

33. Freitas ARR, Donalisio MR, Alarcon-Elbal PM. Excess Mortality and Causes Associated with Chikungunya, Puerto Rico, 2014-2015. *Emerging infectious diseases* **2018**; 24(12): 2352-5.
34. Vogt MB, Lahon A, Arya RP, Spencer Clinton JL, Rico-Hesse R. Dengue viruses infect human megakaryocytes, with probable clinical consequences. *PLoS neglected tropical diseases* **2019**; 13(11): e0007837.
35. Jessie K, Fong MY, Devi S, Lam SK, Wong KT. Localization of dengue virus in naturally infected human tissues, by immunohistochemistry and in situ hybridization. *The Journal of infectious diseases* **2004**; 189(8): 1411-8.

Accepted Manuscript

## Figure legends

**Figure 1.** Weekly epidemiology curve of Chikungunya cases notified in Ceará state and other Brazilian states, and incidence of Chikungunya cases notified by municipalities in Ceará state in 2017 (A). Weekly epidemiology curve and geographical distribution of chikungunya-death described in this study (B). Diagnosis of 68 chikungunya-death described in this study (C).

**Figure 2.** Demographic, symptoms and comorbidities of 68 chikungunya-deaths from Ceará state, Brazil. Age range and sex (A). Clinical characteristics (B). Days from the onset of symptoms of individuals till death (C). Comorbidities associated with chikungunya-deaths (D).

**Figure 3.** Autopsy findings of 42 chikungunya deaths from Ceará state, Brazil.

**Figure 4.** Maximum clade credibility tree of the ECSA genotype of CHIKV in Brazil (n=71), including 6 new sequences from Ceará State. Tips are colored according to the source region of each sample. Clusters from Southeast, Centre-West and North regions have been collapsed for better visualization. The two clusters of sequences from this study were identified as Clade1 and Clade2 based on the earliest estimated TMRCA. A molecular clock approach was used for generating the time-rooted tree (see methods).

## TABLE

**Table 1.** Univariate and multivariable logistic regression analysis of the presence of acute or sub-acute fatalities by Chikungunya infection.

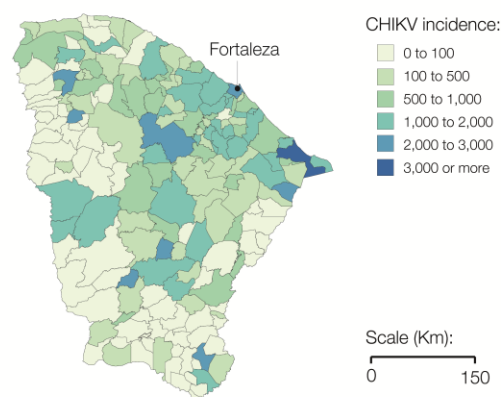
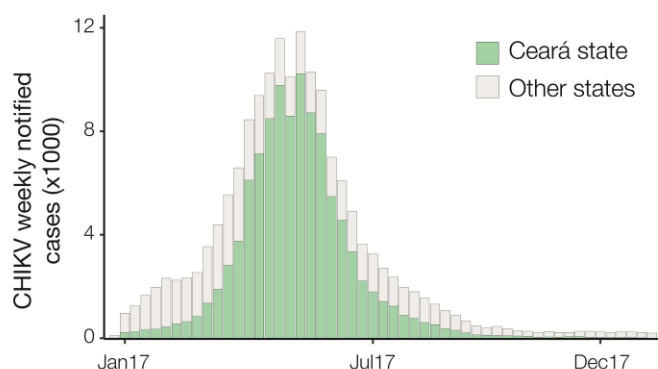
Symptoms	Risk fatality during sub-acute disease					
	unadjusted OR*	IC95%	p-value	adjusted OR *	IC 95%	p-value
<b>Hypertension</b>						
No	Ref	Ref	Ref	Ref	Ref	Ref
Yes	2.77	0.58 - 13. 2	0.200	4.1	0.62-26.9	0.141
<b>Diabetes</b>						
No	Ref.	Ref.	Ref.	Ref	Ref	Ref.
Yes	6.93	1.2 - 40.9	<b>0.033</b>	<b>7.7</b>	1.2 - 50.0	<b>0.033</b>
<b>Diabetes and hypertension</b>						
No	Ref.	Ref	Ref	Ref.	Ref.	Ref.
Yes	1.50	0.20-10-8	0.687	2.48	0.20-29.4	0.472

\*OR = odds ratio

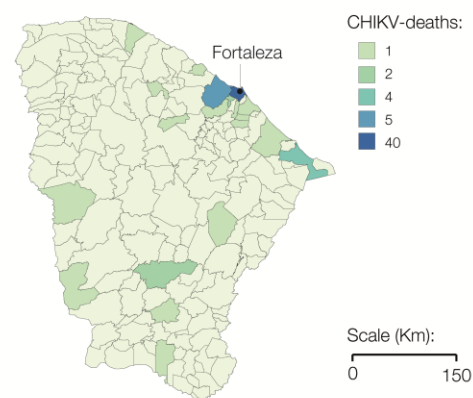
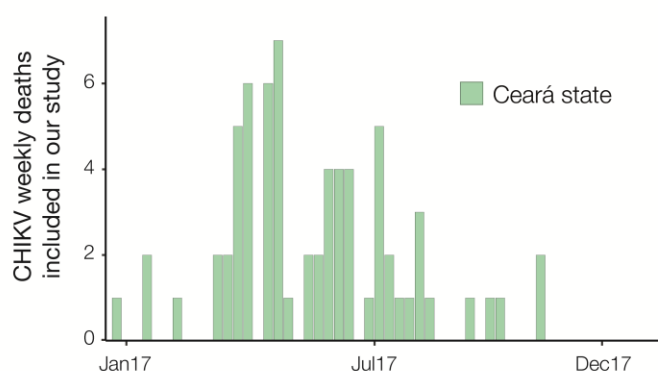
adjusted by: Sex OR = 0.96, p= 0.966; Age OR= 1.00, p=9.66

Figure 1

# A. CHIKV suspected cases



# B. CHIKV fatal cases (this study)



# C. Laboratory results CHIKV-deaths

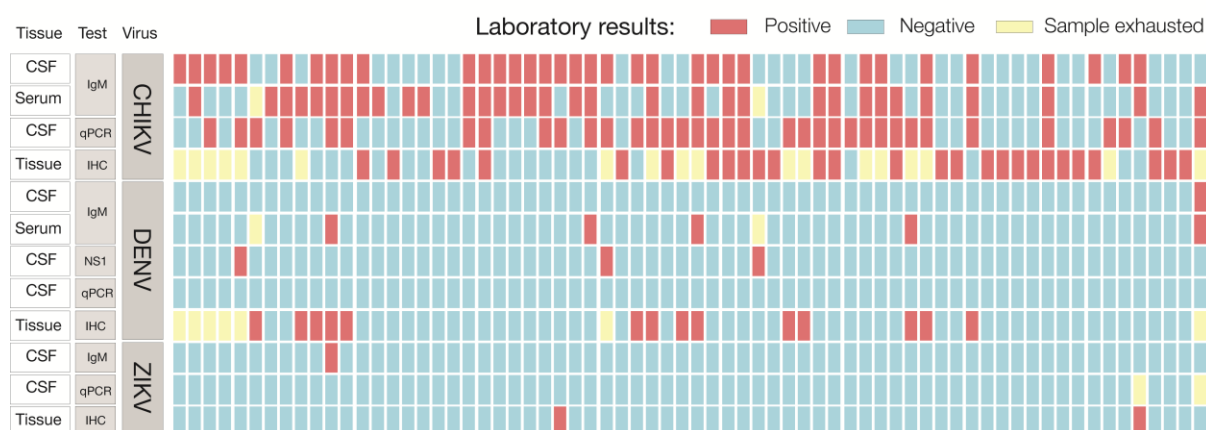




Figure 2

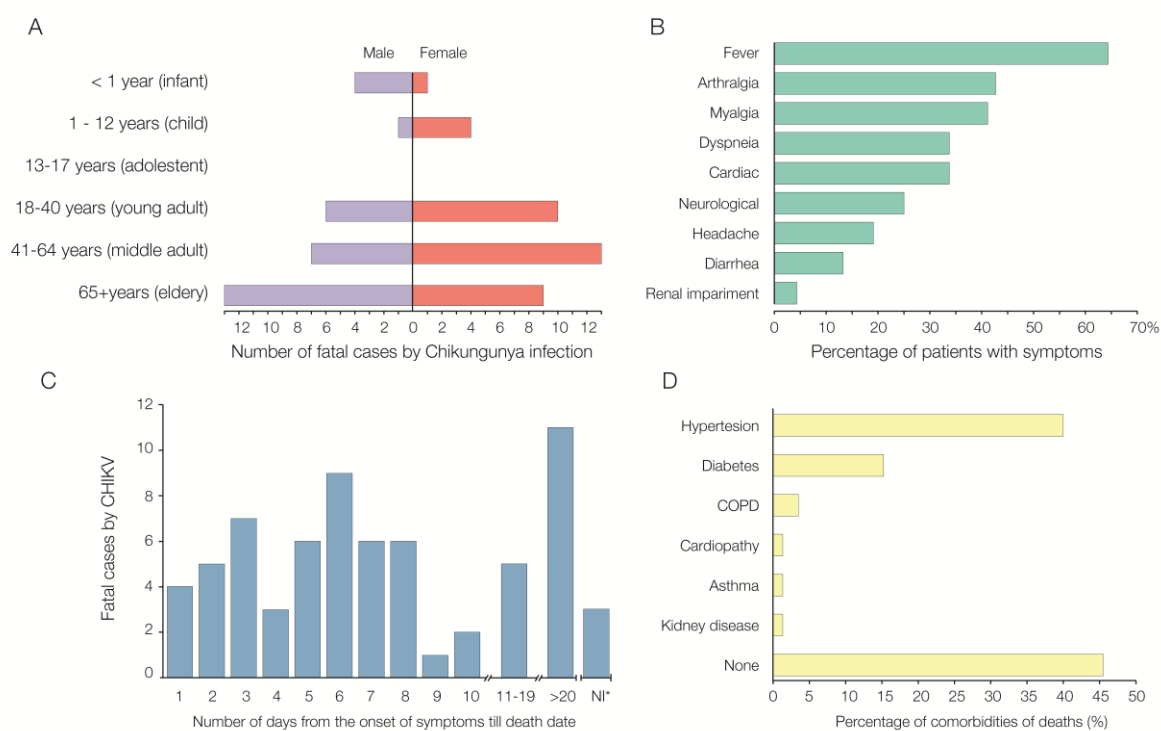


Figure 3

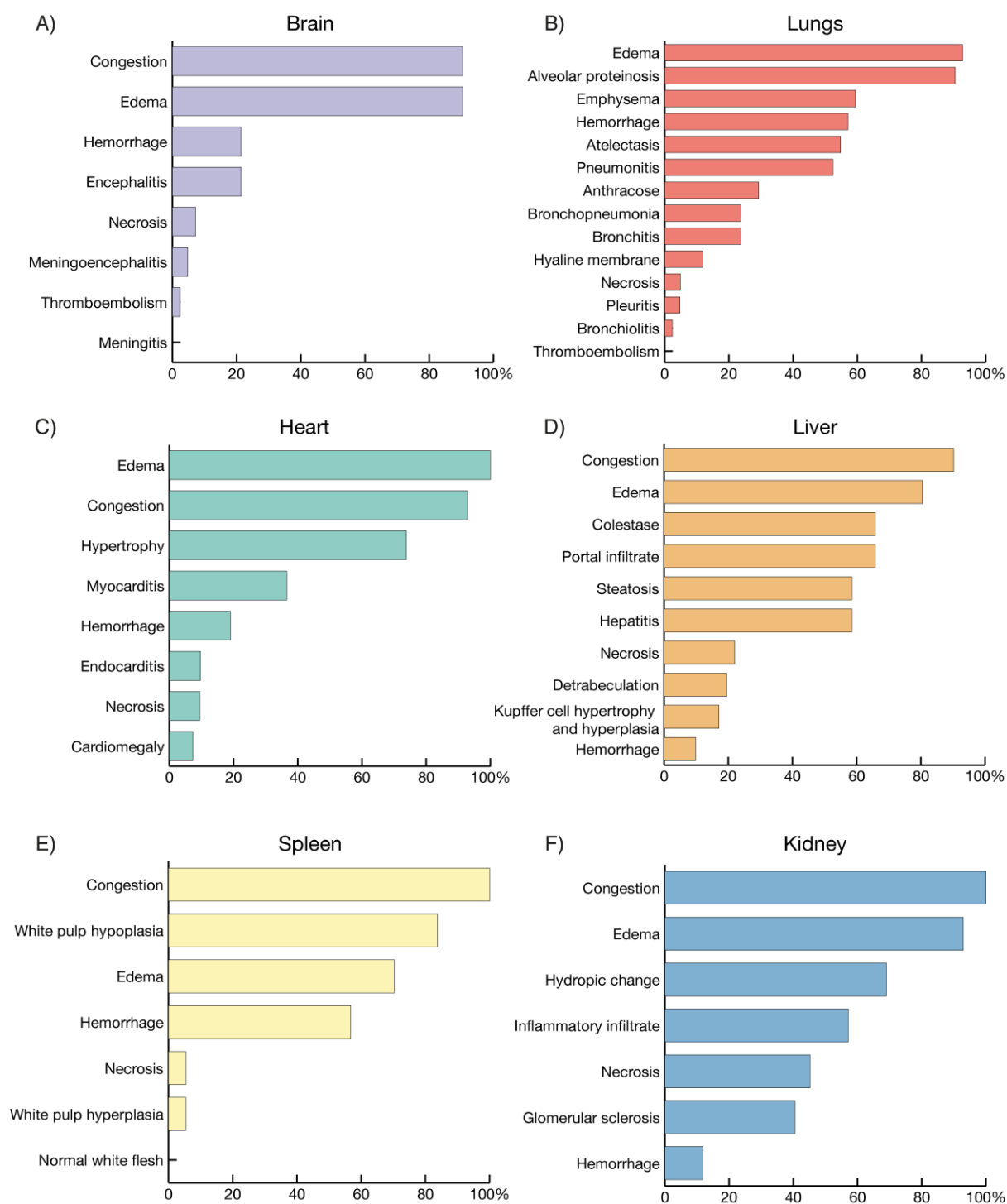


Figure 4

